

# VPx Series

## Full Service - Variable Speed Electric Fire Pump Controller

### Overview

- Designed to maintain a constant pressure output from the fire pump
- A variable frequency drive (VFD) is used to vary the speed of the fire pump's electric motor, taking into consideration the constant pressure output required.
- The variable speed drive will ramp up the electric motor speed to obtain the desired constant pressure output in maximum 10 seconds.

### Standard Features

- Single operator for both isolating switch and circuit breaker
- Surge arrestor
- Locked rotor protector
- Line reactor 5%
- Mode Selector Switch
  - VFD
  - Bypass
- VFD Fault and VFD Bypass visual indication
- Start and stop pushbuttons
- Run test push button
- Emergency start handle
- Phase reversal indication
- Remote start / deluge valve start provision
- Pressure transducers and run test solenoid valve externally mounted
- Audible alarm
- Alarm contacts for remote indication
- Available with automatic transfer switch

### Operator Interface

- ViZITouch V2.1 operator interface
  - Voltage and amperage display
  - Constant pressure output set-point display
  - System pressure, cut-in and cut-out display
  - VFD Hertz display
  - Pressure and event recorder

### Enclosure

- NEMA 12 ventilated assembly
- Conductor entry gland plates
- Lifting lugs
- Doors with keylock handle and quarter-turn latches
- Red RAL3002
- Powder coated / glossy textured finish

### Electric Motor Starting Means

- Primary: VFD
- Bypass: Across the line or Soft start

### Bypass Starting Methods

- Model VPA - Across the line bypass starting
- Model VPS - Soft Start bypass starting

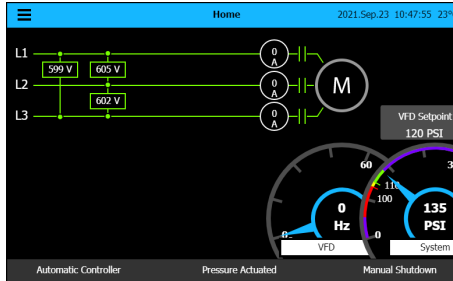


# ViZiTouch V2.1 Operator Interface

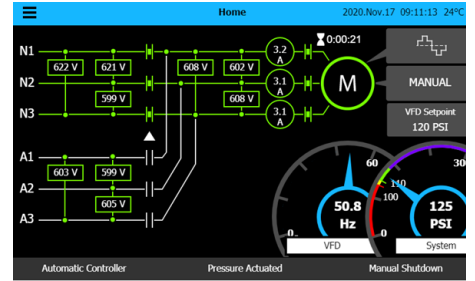


## HOME SCREEN

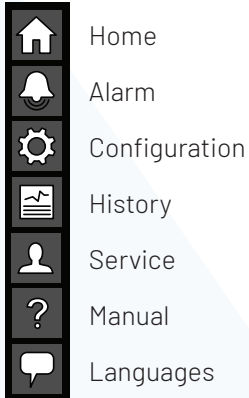
Electric Fire Pump Controller



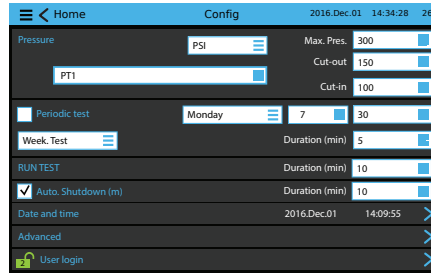
Electric Fire Pump Controller with Automatic Transfer Switch



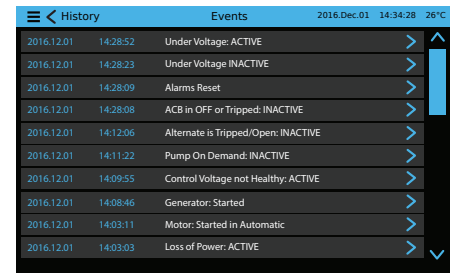
## ON-SCREEN MENU



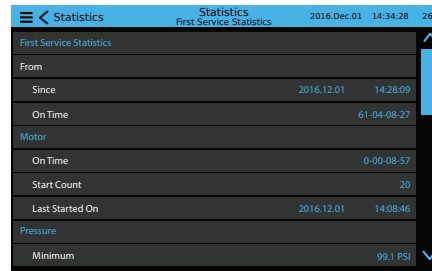
## SETTINGS



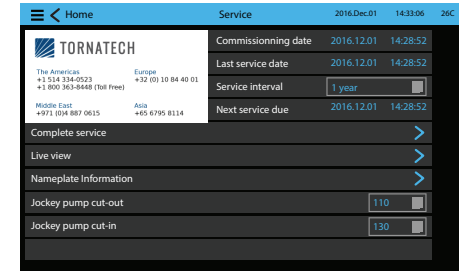
## EVENTS



## HISTORY/STATISTICS



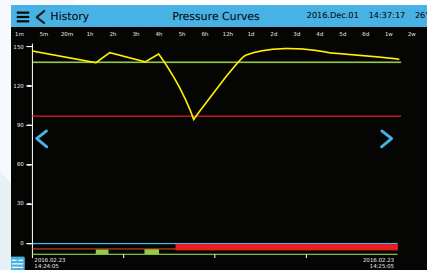
## SERVICE



## VIZITOUCH V2.1 MAJOR FEATURES INCLUDE:

- Touch screen operation with 7" color display and intuitive graphics
- Multi-language
- Upgradable software
- Password protected

## PRESSURE CURVES



**VPX SERIES / VOLTAGE / HP**

| Model        | Voltage     | HP    |
|--------------|-------------|-------|
| VPA, VPA+VPU | 200V        | 5-75  |
|              | 208V - 240V | 5-100 |
| VPS, VPS+VPU | 380V - 415V | 5-350 |
|              | 440V - 480V | 5-450 |
|              | 575V - 600V | 5-100 |

**HOW TO ORDER:** VPx - V / HP / Ph / Hz

Ex.: VPA - 208 / 30 / 3 / 60

**AMERICAS**

**Tornatech Inc.**

**Head Office**

**Laval, Quebec, Canada**

**Tel: + 1 514 334 0523**

**Toll free: + 1 800 363 8448**

**EUROPE**

**Tornatech Europe SA**

**Mont-Saint-Guibert, Belgium**

**Tel: + 32 (0) 10 84 40 01**

**MIDDLE EAST**

**Tornatech FZE**

**Dubai, United Arab Emirates**

**Tel: + 971(0)4 821 7555**

**ASIA**

**Tornatech Pte Ltd.**

**Singapore**

**Tel: + 65 6795 8114**

**Tel: + 65 6795 7823**