

# Model GPL

## Limited Service Electrical Fire Pump Controller

### Limitations

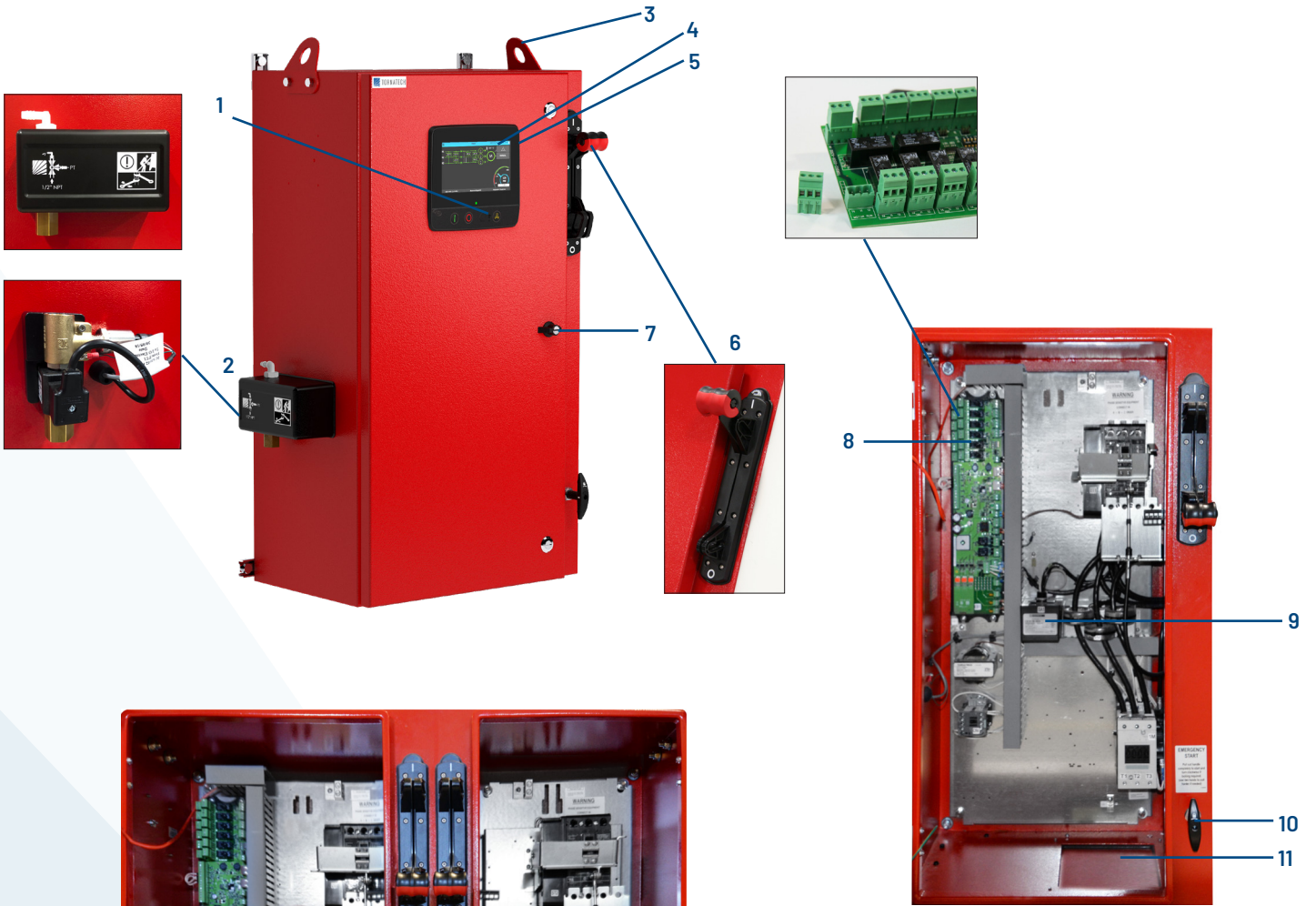
- Across the line starting only
- Horsepower rating of maximum 30hp
- Can only be installed where acceptable by the authority having jurisdiction
- Not accepted in FM insured property

### Standard Features

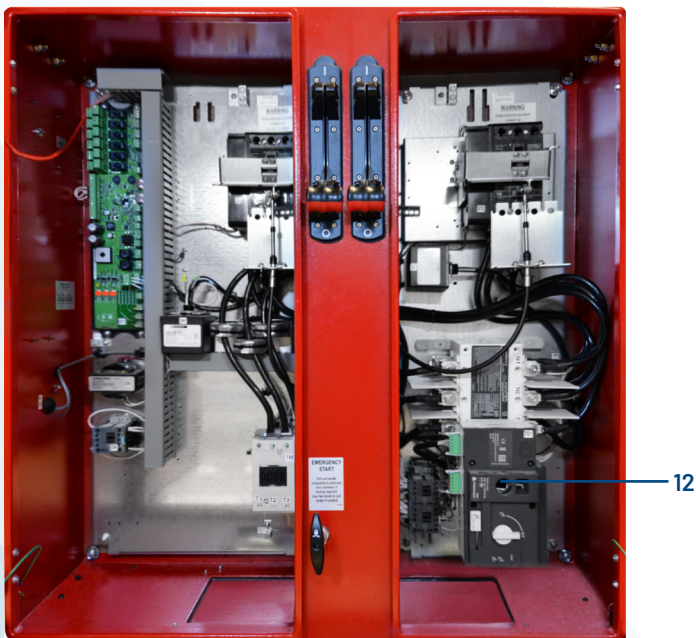
- ViZiTouch 2.1 operator interface
- NEMA 2 assembly
- Available in single phase
- Pressure and event recorder
- Voltage and amperage display
- Flange mounted disconnect handle
- Surge arrestor
- Lifting lugs
- Run test push button
- Available with automatic power transfer switch
- Emergency start handle
- Start and stop pushbuttons
- Locked rotor protector
- Phase reversal indication (three phase model only)
- Remote start / deluge valve start provision
- Pressure transducer and run test solenoid valve externally mounted
- Gland plate
- Alarm buzzer
- Alarm contacts for remote indication



1. Alarm buzzer
2. Externally mounted pressure transducer and run test solenoid valve with protective cover
3. Lifting Lugs
4. ViZiTouch 2.1 operator interface
5. Side USB device connector
6. Custom designed Isolation switch / Circuit breaker operator handle
7. Key lock
8. Remote alarm contacts with removable terminals
9. Surge arrestor
10. Custom designed emergency start mechanism with integrated limit switch
11. Gland plate
12. Automatic power transfer switch



MODEL GPL SHOWN



MODEL GPL+GLU SHOWN

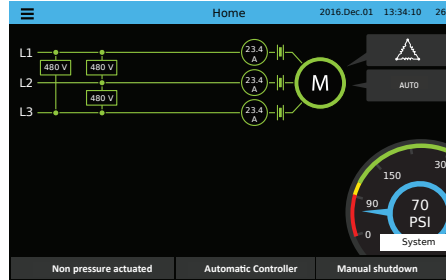


# ViZiTouch 2.1 Operator Interface

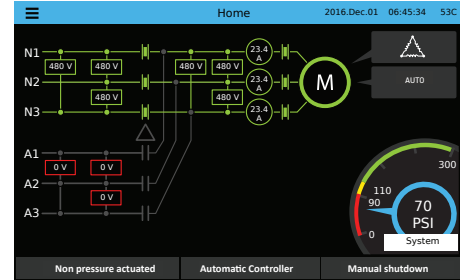


## HOME SCREEN

Electric Fire Pump Controller



Electric Fire Pump Controller with Automatic Transfer Switch

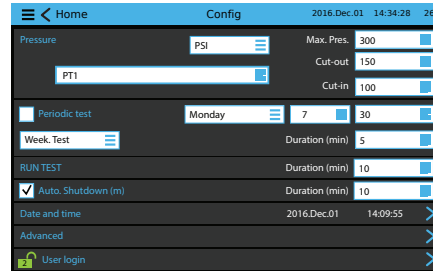


Three-phase models shown. Also available in single phase 220v to 240v.

## ON-SCREEN MENU

- Home
- Alarm
- Configuration
- History
- Service
- Manual
- Languages

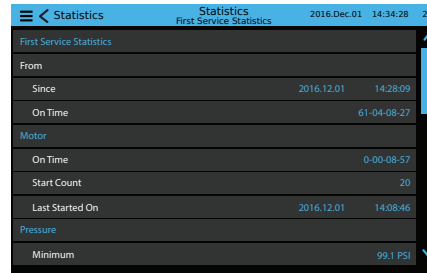
## SETTINGS



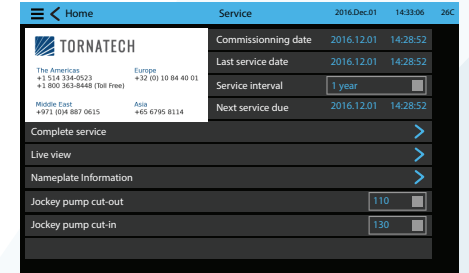
## EVENTS

History	Events	2016.Dec.01 14:34:28 26C
2016.12.01 14:28:52	Under Voltage: ACTIVE	>
2016.12.01 14:28:23	Under Voltage: INACTIVE	>
2016.12.01 14:28:09	Alarms Reset	>
2016.12.01 14:28:08	ACB in OFF or Tripped: INACTIVE	>
2016.12.01 14:12:06	Alternate is Tripped/Open: INACTIVE	>
2016.12.01 14:11:22	Pump On Demand: INACTIVE	>
2016.12.01 14:09:55	Control Voltage not Healthy: ACTIVE	>
2016.12.01 14:08:46	Generator: Started	>
2016.12.01 14:03:11	Motor: Started in Automatic	>
2016.12.01 14:03:03	Loss of Power: ACTIVE	>

## HISTORY/STATISTICS



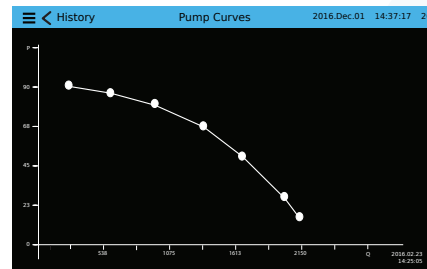
## SERVICE



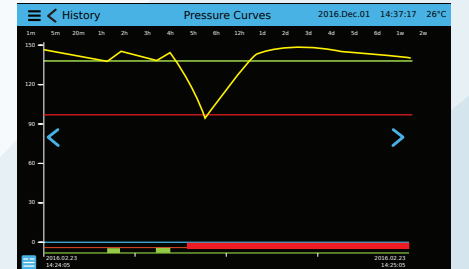
## VIZITOUCH 2.1 MAJOR FEATURES INCLUDE:

- Touch screen operation with 7" color display and intuitive graphics
- Multi-language
- Upgradable software
- Password protected

## PUMP CURVES



## PRESSURE CURVES



### SHORT CIRCUIT WITHSTAND RATING

Withstand Rating (short circuit current)	120V to 240V - 1ph - 50/60HZ	
	Normal Power Section	Alternate Power Section
Standard	100, 000A	
Optional	n/a	

### THREE PHASE - SHORT CIRCUIT WITHSTAND RATING

Withstand Rating (short circuit current)	208V to 240V - 3ph - 60HZ		380V to 480V - 3ph - 50/60HZ		600V - 3ph - 60HZ	
	Normal Power Section	Alternate Power Section	Normal Power Section	Alternate Power Section	Normal Power Section	Alternate Power Section
Standard	100, 000A		65, 000A		25, 000A	
Optional	n/a		n/a		n/a	

### HP / VOLTAGE / DIMENSIONS / WEIGHTS

208V to 240V - 1ph - 50/60HZ	380V to 600V - 3ph - 60HZ	GPL		GPL + GLU	
HP Range		Dimension in inches (mm)	Approx. Shipping Weight in Lbs (Kg)	Dimension in inches (mm)	Approx. Shipping Weight in Lbs (Kg)
5 - 30		20"w x 36"h x 12"d (508 x 914 x 305)	170 (35)	36"w x 36"h x 12"d (914 x 914 x 305)	280 (127)

**HOW TO ORDER:** GPL - V / HP / Ph / Hz / Options

Ex.: GPL - 208 / 30 / 3 / 60 / Options

#### AMERICAS

Tornatech Inc.  
Head Office  
Laval, Quebec, Canada  
Tel: + 1 514 334 0523  
Toll free: + 1 800 363 8448

#### EUROPE

Tornatech Europe SA  
Mont-Saint-Guibert, Belgium  
Tel: + 32 (0) 10 84 40 01

#### MIDDLE EAST

Tornatech FZE  
Dubai, United Arab Emirates  
Tel: + 971 (0) 4 821 7555

#### ASIA

Tornatech Pte Ltd.  
Singapore  
Tel: + 65 6795 8114  
Tel: + 65 6795 7823