

# Model MPA

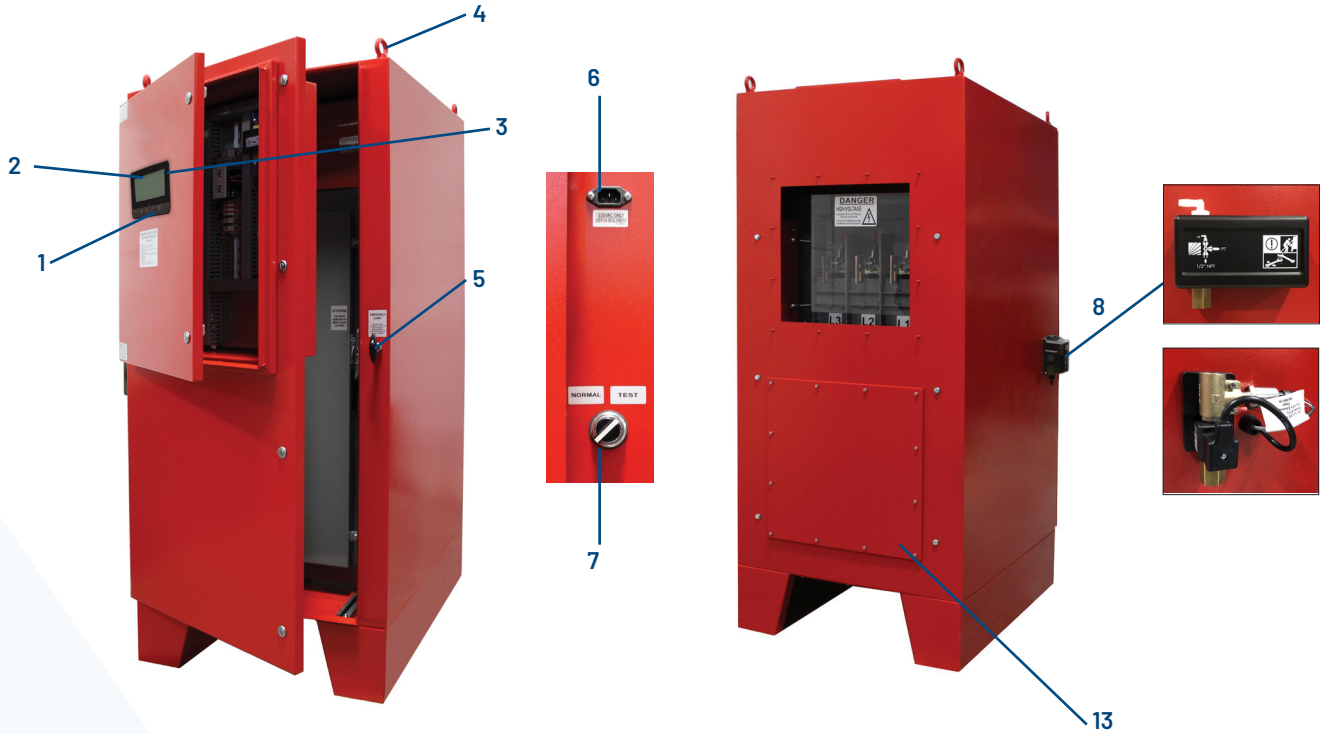
## Medium Voltage Fire Pump Controller

### Standard Features

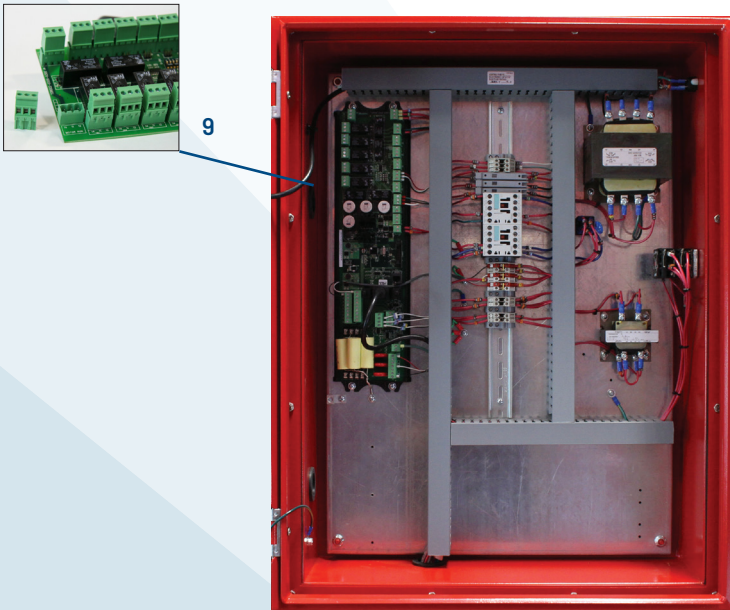
- ViZiTouch 2.1 operator interface
- NEMA 2 assembly
- Pressure and event recorder
- Voltage and amperage display
- Spare set of fuses
- Lifting lugs
- Run test push button
- Emergency start handle
- Start and stop pushbuttons
- Locked rotor protector
- Phase reversal indication
- Remote start / deluge valve start provision
- Pressure transducer and run test solenoid valve externally mounted
- Cable entry removable gland plates
- Alarm buzzer
- Alarm contacts for remote indication



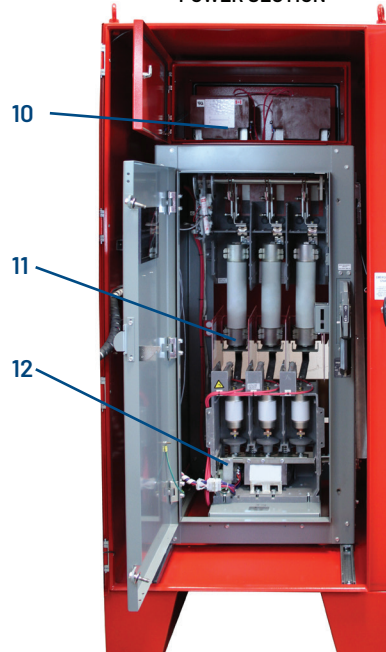
1. Alarm buzzer
2. ViZiTouch 2.1 operator interface
3. Side USB device connector
4. Lifting lugs
5. Emergency start handle
6. Connection for 220VAC for testing of control circuit
7. Normal / test selector switch for control circuit
8. Externally mounted pressure transducer and run test solenoid valve with protective cover
9. Removable alarm contacts
10. Transformer medium / low voltage
11. Power fuses
12. Vacuum contactor
13. Back, top, and bottom removable gland plates for power and motor lead connections. Equipped with inner protective covers for operator safety



**CONTROL SECTION**



**POWER SECTION**

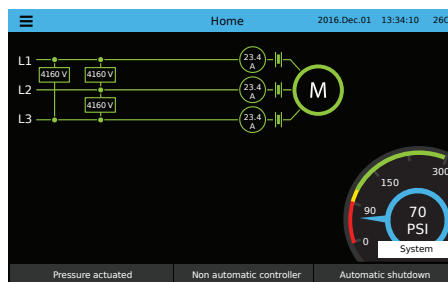




# ViZiTouch 2.1 Operator Interface



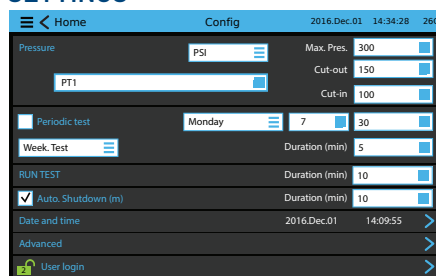
## HOME SCREEN



## ON-SCREEN MENU

- Home
- Alarm
- Configuration
- History
- Service
- Manual
- Languages

## SETTINGS



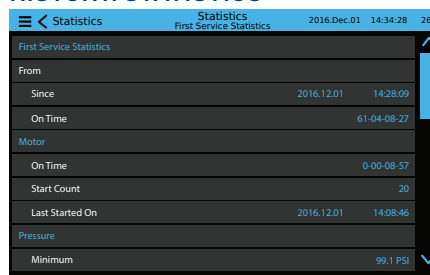
## EVENTS

Date	Time	Event
2016.12.01	14:28:52	Under Voltage: ACTIVE
2016.12.01	14:28:23	Under Voltage: INACTIVE
2016.12.01	14:28:09	Alarms Reset
2016.12.01	14:28:08	Low Ambient Temperature: INACTIVE
2016.12.01	14:12:06	Low Ambient Temperature: ACTIVE
2016.12.01	14:11:22	Pump On Demand: INACTIVE
2016.12.01	14:09:55	Control Voltage not Healthy: ACTIVE
2016.12.01	14:08:46	Motor: Stopped
2016.12.01	14:03:11	Motor: Started in Automatic
2016.12.01	14:03:03	Loss of Power: ACTIVE

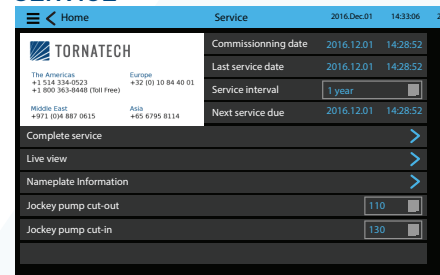
## VIZITOUCH 2.1 MAJOR FEATURES INCLUDE:

- Touch screen operation with 7" color display and intuitive graphics
- Multi-language
- Upgradable software
- Password protected

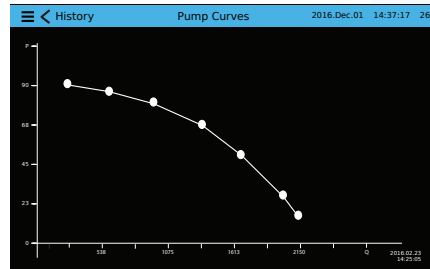
## HISTORY/STATISTICS



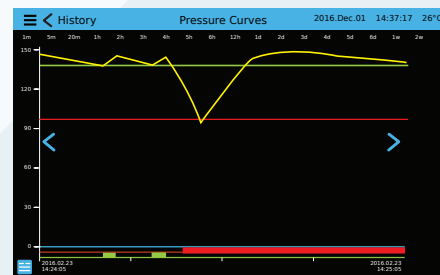
## SERVICE



## PUMP CURVES



## PRESSURE CURVES



## MODEL MPA

Voltage	HP Range	Short Circuit Withstand Rating	Dimensions inches (mm)	Approx. Shipping Dimensions lbs (kg)	Approx. Shipping Weight lbs (kg)
2200V - 2300V	100 to 1000	50kA	76 $\frac{1}{8}$ "h x 35"w x 44 $\frac{1}{4}$ "d (1935 x 890 x 1124)	76 $\frac{1}{8}$ "h x 35"w x 44 $\frac{1}{4}$ "d (1935 x 890 x 1124)	1400 (635)
3000V - 3300V	100 to 1500				
4000V - 4160V	100 to 2000				
4800V - 5000V	100 to 2500				
5500V	100 to 3000				
6000V	100 to 3500				
6300V - 6900V	100 to 4000				

**HOW TO ORDER:** MPA - V / HP / Ph / Hz / Options

Ex.: MPA - 4160 / 500 / 3 / 50 / B19, D11

### AMERICAS

Tornatech Inc.  
Head Office  
Laval, Quebec, Canada  
Tel: + 1 514 334 0523  
Toll free: + 1 800 363 8448

### EUROPE

Tornatech Europe SA  
Mont-Saint-Guibert, Belgium  
Tel: + 32 (0) 10 84 40 01

### MIDDLE EAST

Tornatech FZE  
Dubai, United Arab Emirates  
Tel: + 971 (0) 4 821 7555

### ASIA

Tornatech Pte Ltd.  
Singapore  
Tel: + 65 6795 8114  
Tel: + 65 6795 7823